

ARB AIR LOCKER *Air Operated Locking Differentials*

RD202 Nissan C200/R200A,29 SPL

Specs:

Axle Spline	29 tooth, Ø30.4mm [1.20"]
Ratio Supported	All
Ring Gear ID	128.0mm [5.04"]
Ring Gear Bolts	10 bolts on Ø150mm [5.91"]
Ring Gear Bolt Size	12mm
Ring Gear Torque	120Nm [89 ft-lb]
Backlash	0.13-0.18mm [0.005-0.007"]
Bearing Cap Torque	93Nm [69 ft-lb]

Notes:

- For replacement O-rings use only BS132 Viton 75.

When used with 10mm ring gear bolts, adapter sleeves of the following size are required:
Outside: Ø12.15mm [0.478"]
Inside: Ø10.45mm [0.411"]
Length: 10mm [0.39"]
Bolt Torque: 74Nm [55 ft-lb]

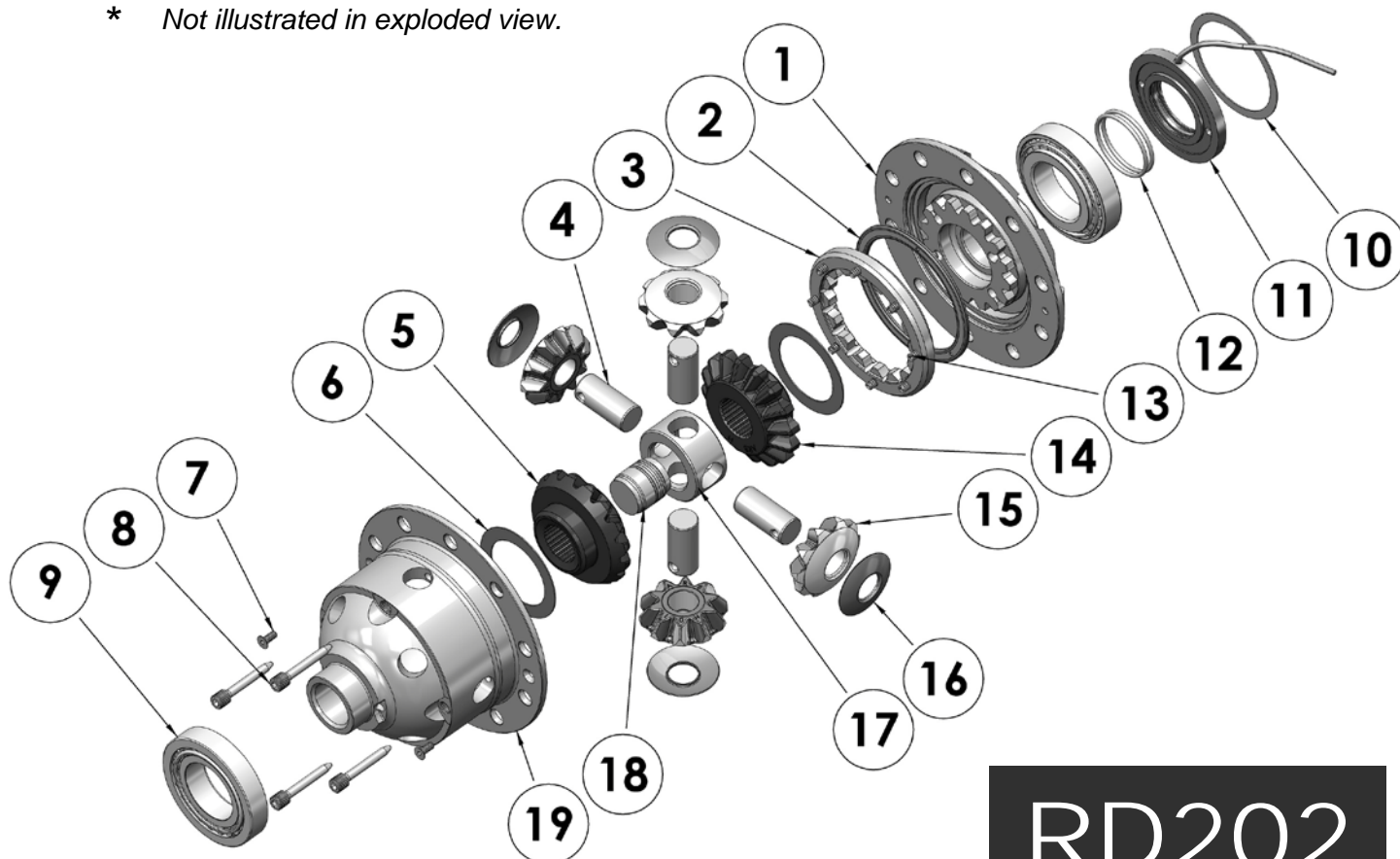
Refer to axle modification tech note ([Sec. 5.4](#)) if axle binds inside carrier.

Refer to pinion modification tech note ([Sec. 5.6](#))

For 31 spline model refer to RD201 ([Sec. 2.201](#))
- Available only as complete 6 gear set # 728H251

ITEM #	QTY	DESCRIPTION	PART #	NOTES
1	1	FLANGE CAP ASSEMBLY	027334	
2	1	BONDED SEAL	160702	
3	1	CLUTCH GEAR	050806	
4	4	SHORT CROSS SHAFT	060403	
5	1	SIDE GEAR	SEE NOTE	2
6	2	SIDE GEAR THRUST WASHER	151010	
7	2	COUNTERSUNK SCREW	200213	
8	4	RETAINING PIN	120601	
9	*	TAPERED ROLLER BEARING	NOT SUPPLIED	
10	1	SHIM KIT	SHK009	
11	1	SEAL HOUSING ASSEMBLY	080803	
12	2	SEAL HOUSING O-RINGS	160205	1
13	8	RETURN SPRINGS	150113	
14	1	SPLINED SIDE GEAR	SEE NOTE	2
15	4	PINION GEAR	SEE NOTE	2
16	4	PINION THRUST WASHER	151110	
17	1	SPIDER BLOCK	070201	
*	1	THRUST BLOCK (THREADED)	110401	
18	1	THRUST BLOCK	110501	
19	1	DIFFERENTIAL CASE	013034	
*	1	BULKHEAD FITTING (O-RING TYPE)	170111	
*	1	PUSH-IN FITTING (5mm to 1/8" BSPP)	170201	
*	1	AIR LINE (5mm DIA X 6m LONG)	170301	
*	1	NIPPLE (1/8" to 1/8" BSPT)	170501	
*	1	SOLENOID VALVE (12V)	180103	
*	1	SWITCH	180209	
*	1	SWITCH COVER (FRONT)	180210	
*	1	SWITCH COVER (REAR)	180211	
*	10	CABLE TIE	180301	
*	1	WARNING LABEL	210101	
*	1	BUMPER STICKER	210102	
*	1	OPERATION & SERVICE MANUAL	210200	
*	1	INSTALLATION GUIDE	2102202	

* Not illustrated in exploded view.



RD202

