

ARB AIR LOCKER *Air Operated Locking Differentials*

RD40 GM 14 Bolt, 9.5", C-clip

Specs:

Axle Spline	33 tooth, Ø34.8mm [1.37"]
Ratio Supported	All
Ring Gear ID	152.9mm [6.02"]
Ring Gear OD	241mm [9.50"]
Ring Gear Bolts	12 bolts on Ø181mm [7.13"]
Ring Gear Torque	102Nm [75 ft-lb]
Backlash	0.15-0.25mm [0.006-0.010"]
Bearing Cap Torque	108Nm [80 ft-lb]

Notes:

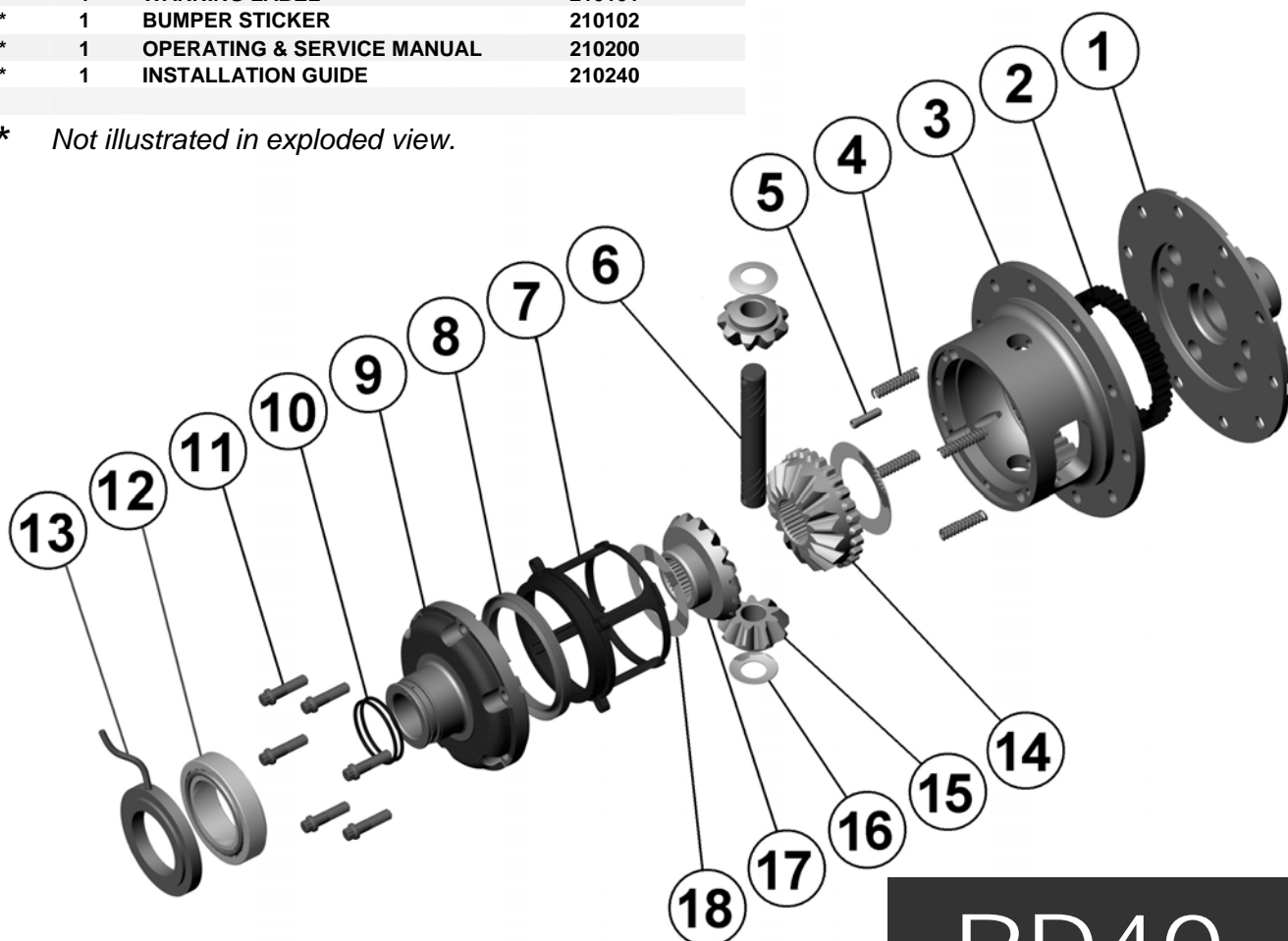
- For replacement O-rings use only BS135 Viton 75.
- For replacement bearing use Timken part # JLM506849 / JLM506810.

Ring gear bolts are M12x1.5mm left-hand thread, and must be removed in a clockwise direction.

Variation in OE casting may require modification to the bearing cap to suit lock tab position.
- Available only as complete 4 gear set #728E022C

ITEM #	QTY	DESCRIPTION	PART #	NOTES
01	1	FLANGE CAP	022001	
02	1	CLUTCH GEAR	050402	
03	1	DIFFERENTIAL CASE	012101	
04	4	RETURN SPRING	150101	
05	1	CROSS SHAFT RETAINING PIN	120401	
06	1	LONG CROSS SHAFT	060901	
07	1	PISTON	040501	
08	1	BONDED SEAL	160703	
09	1	CYLINDER CAP	031001	
10	2	SEAL HOUSING O-RING	160211	1
11	8	CYLINDER CAP RETAINING BOLT	200204	
12	1	TAPERED ROLLER BEARING	160110	2
13	1	SEAL HOUSING ASSEMBLY	080901	
14	1	SPLINED SIDE GEAR	SEE NOTE	3
15	2	PINION GEAR	SEE NOTE	3
16	2	PINION THRUST WASHER	151104	
17	1	SIDE GEAR	SEE NOTE	3
18	2	SIDE GEAR THRUST WASHER	151004	
*	1	'C' CLIP KIT	CCK002	
*	1	M6 RETAINING BOLT	200204	
*	1	LOCK WASHER	4581059	
*	1	PIN WITHDRAWAL TOOL	1201T	
*	1	BULKHEAD FITTING KIT (O-RING TYPE)	170111	
*	1	PUSH-IN FITTING (5mm to 1/8" BSPP)	170201	
*	1	AIR LINE (5mm DIA X 6m LONG)	170301	
*	1	NIPPLE (1/8" to 1/8" BSPT)	170501	
*	1	SOLENOID VALVE (12V)	180103	
*	1	SWITCH	180209	
*	1	SWITCH COVER (REAR)	180211	
*	10	CABLE TIE	180301	
*	1	WARNING LABEL	210101	
*	1	BUMPER STICKER	210102	
*	1	OPERATING & SERVICE MANUAL	210200	
*	1	INSTALLATION GUIDE	210240	

* Not illustrated in exploded view.



RD40