

# ARB AIR LOCKER *Air Operated Locking Differentials*

## RD204 Suzuki Vitara,RR,26 SPL,10 bolt RG

### Specs:

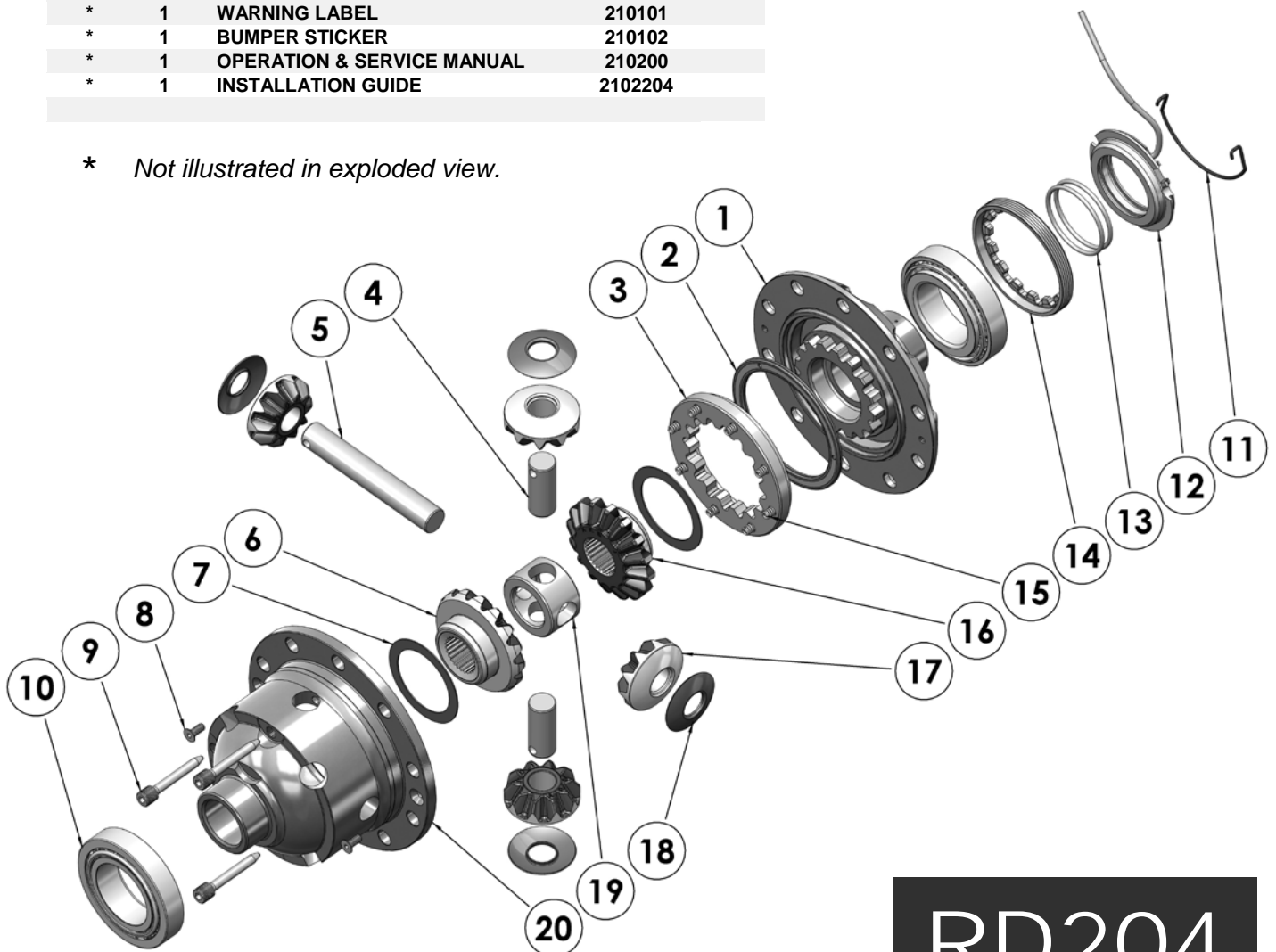
Axle Spline	26 tooth, Ø27.4mm [1.08"]
Ratio Supported	All
Ring Gear ID	118.0mm [4.65"]
Ring Gear Bolts	10 bolts on Ø140mm [5.51"]
Ring Gear Torque	95Nm [70 ft-lb]
Backlash	0.13-0.18mm [0.005-0.007"]
Bearing Cap Torque	85Nm [63 ft-lb]

### Notes:

- For replacement O-rings use only BS133 Viton 75.  
  
For seal housing set-up refer to tech note (Section 5.2).  
  
For 12 bolt RG model refer to RD209 (Section 2.209)
- Available only as complete 6 gear set # 728J081

ITEM #	QTY	DESCRIPTION	PART #	NOTES
01	1	FLANGE CAP	028514	
02	1	BONDED SEAL	160701	
03	1	CLUTCH GEAR	050802	
04	2	SHORT CROSS SHAFT	061402	
05	1	LONG CROSS SHAFT	061302	
06	1	SIDE GEAR	SEE NOTE	2
07	2	SIDE GEAR THRUST WASHER	151011	
08	2	COUNTERSUNK SCREW	200213	
09	3	RETAINING PIN	120601	
10	-	TAPERED ROLLER BEARING	NOT SUPPLIED	
11	1	SEAL HOUSING RETAINING CLIP	150601	
12	1	SEAL HOUSING ASSEMBLY	081902	
13	2	SEAL HOUSING O-RINGS	160235	1
14	1	ADJUSTER NUT	100101	
15	8	RETURN SPRINGS	150113	
16	1	SPLINED SIDE GEAR	SEE NOTE	2
17	4	PINION GEAR	SEE NOTE	2
18	4	PINION THRUST WASHER	151112	
19	1	SPIDER BLOCK	070503	
20	1	DIFFERENTIAL CASE	013114	
*	1	BULKHEAD FITTING KIT (O-RING TYPE)	170111	
*	1	PUSH-IN FITTING (5mm to 1/8" BSPP)	170201	
*	1	AIR LINE (5mm DIA X 6m LONG)	170301	
*	1	NIPPLE (1/8" to 1/8" BSPT)	170501	
*	1	SOLENOID VALVE (12V)	180103	
*	1	SWITCH	180209	
*	1	SWITCH COVER (REAR)	180211	
*	10	CABLE TIE	180301	
*	1	WARNING LABEL	210101	
*	1	BUMPER STICKER	210102	
*	1	OPERATION & SERVICE MANUAL	210200	
*	1	INSTALLATION GUIDE	2102204	

\* Not illustrated in exploded view.



# RD204

