

ARB AIR LOCKER *Air Operated Locking Differentials*

RD215 Nissan H260, 37 Spline

Specs:

Axle Spline	37 tooth, Ø38.4mm [1.51"]
Ratio Supported	All
Ring Gear ID	165.1mm [6.50"]
Ring Gear OD	260mm [10.24"]
Ring Gear Bolts	10 bolts on Ø200mm [7.87"]
Ring Gear Torque	212Nm [156 ft-lb]
Backlash	0.15-0.20mm [0.006-0.008"]
Bearing Cap Torque	88Nm [65 ft-lb]

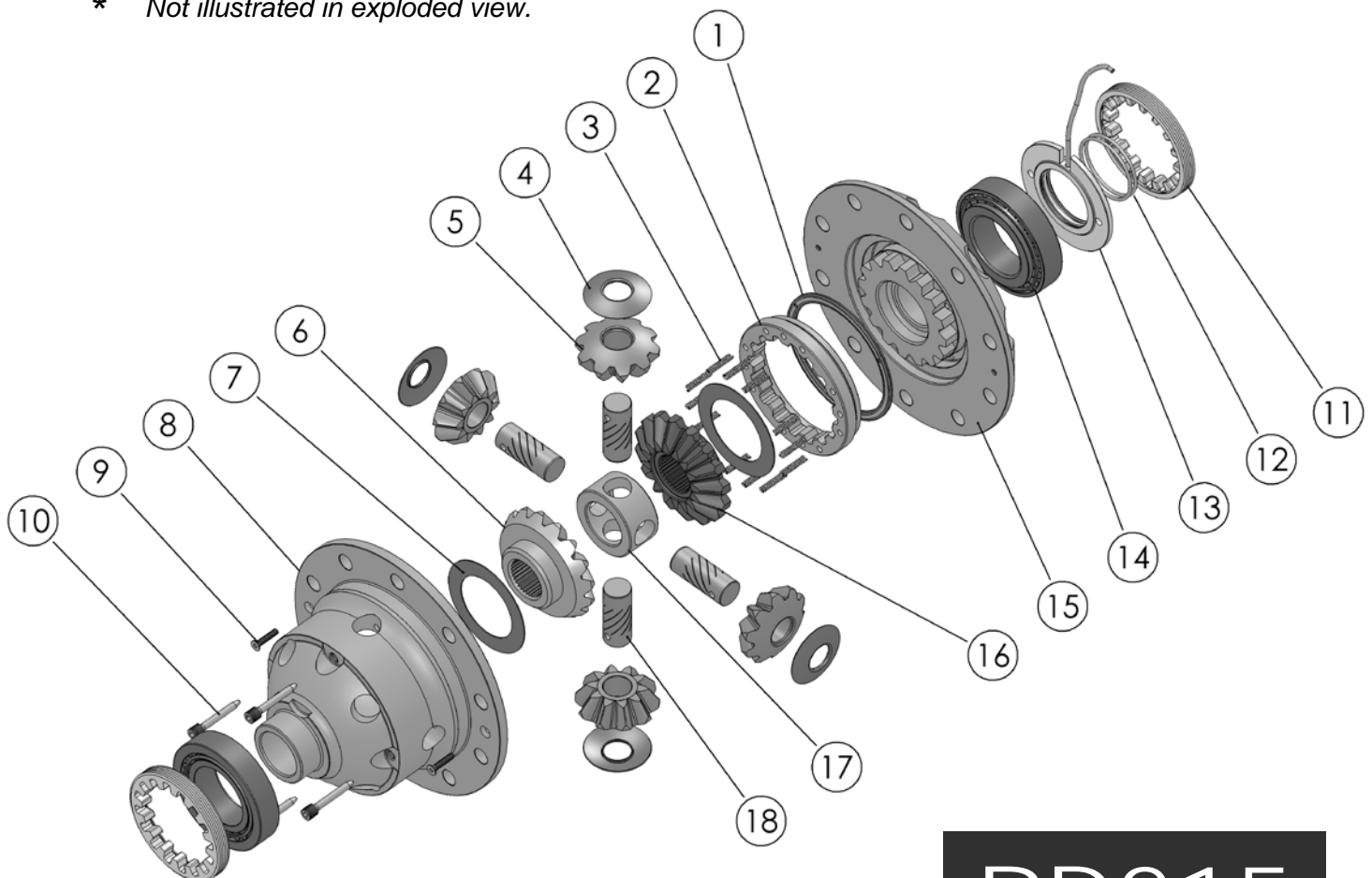
Notes:

- 1 For replacement O-rings use only BS129 Viton 75.
- 2 Available only as complete 6 gear set # 728K151

For 34 spline models, please refer to RD214 ([Section 2.214](#))

ITEM #	QTY	DESCRIPTION	PART #	NOTES
1	1	BONDED SEAL	160703	
2	1	CLUTCH GEAR	050807	
3	12	RETURN SPRINGS	150107	
4	4	PINION THRUST WASHER	151113	
5	4	PINION GEAR	728K151	
6	1	SIDE GEAR	728K151	
7	2	SIDE GEAR THRUST WASHER	151007	
8	1	DIFFERENTIAL CASE	013215	
9	2	COUNTERSUNK SCREW	200214	
10	4	RETAINING PIN	120601	
11	2	ADJUSTER NUT	NOT SUPPLIED	
12	2	SEAL HOUSING O-RINGS	160221	
13	1	SEAL HOUSING ASSEMBLY	081821	
14	2	TAPERED ROLLER BEARING	NOT SUPPLIED	
15	1	FLANGE CAP ASSEMBLY	028615	
16	1	SPLINED SIDE GEAR	728K151	
17	1	SPIDER BLOCK	070402	
18	4	SHORT CROSS SHAFT	061601	
*	1	BULKHEAD FITTING KIT (O-RING TYPE)	170111	
*	1	PUSH-IN FITTING (5mm to 1/8" BSPP)	170201	
*	1	NIPPLE (1/8" to 1/8" BSPT)	170501	
*	1	AIR LINE (5mm DIA X 6m LONG)	170301	
*	1	SOLENOID VALVE (12V)	180103	
*	1	SWITCH	180209	
*	1	SWITCH COVER (REAR)	180211	
*	10	CABLE TIE	180301	
*	1	WARNING LABEL	210101	
*	1	BUMPER STICKER	210102	
*	1	OPERATION & SERVICE MANUAL	210200	
*	1	INSTALLATION GUIDE	2102215	

* Not illustrated in exploded view.



RD215

