



Installation Instructions EXPEDITION Lift Pro-8023

Attention! Not reading these instructions prior to installing this kit may cause irreversible damage and/or harm to your suspension system and/or other vehicle components. This kit should be only installed by professionals and 4x4proyect.com cannot be held responsible for any damage and/or harm caused by improper installation.

Thank you for your trust in 4x4 Proyect. The product you have acquired has been designed and manufactured with our professional partners to guarantee the highest standards.

Warning: Carefully read and follow these instructions to obtain optimum performance.

- Only new parts in their original packaging will be accepted for exchange. Once installed, parts cannot be returned except for warranty claims.
- 4x4proyect suspension kits are intended for vehicle-specific applications. Installations on other than the listed vehicles can have fatal consequences. Therefore adhere to all installation instructions.
- Check that all components have been delivered by crosschecking them with the below parts list.
- Check the application list in the TÜV-approval documentation and make sure your vehicle is included.
- Should you find any parts missing or have doubts about application and/or installation, contact your dealer or 4x4proyect before starting the installation process.
- This installation instructions complement the vehicles's factory workshop manual.

I. Parts list:

1. Review the parts list in the appendix to make sure all needed components have been delivered. Pay attention to the different parts groups depending on your vehicle and configuration.

II. Preparing the vehicle

1. The vehicle must be raised with a car lift or other suitable equipment and safely supported by suitable means.
2. If necessary, the wheels must be removed and re-installed afterwards. Refer to factory torque specifications as per the vehicle manufacturer's workshop manual.

III. Removing the OE front Shock absorbers and springs

1. Remove the OE front shock absorbers and springs as per the vehicle manufacturer's workshop manual.

IV. Preparation of front shock absorbers

1. Adjust spring seat by loosening the safety worm screw and threading the spring seat to the desired location. Final adjustment will take place after installation, based on individual vehicle weight. Highest setting is attained at 250mm measured from spring seat to centre of upper strut fixation-bolt. Lowest setting will result in ca. OEM ride height. See Fig. 2 for correct measurement. For average vehicles that do not carry heavy weights on the front axle a setting of 220-230mm is normally enough.
2. Reuse original bumpstop and dustcover and install on new shock.
3. Install the new spring #4PDCS1018 onto the front shock absorber #8023F. Pay attention to the orientation of the spring. The flat ground end must be installed on the bottom to fit the threaded spring seat.
4. Install OE top hat bushings (fitting of new units is recommended) with 14mm holes as per the vehicle manufacturer's workshop manual. If your vehicle is equipped with 16mm top hat bushings, replace with 14mm units. Example OEM partnumber: OE2N0412331D. Compressing the spring with a suitable spring compressor will make this task easier.
5. It's recommended to oil or grease the coilover threads and unloading the spring before making any adjustments.

V. Installation of front shock absorbers

1. Install the fully assembled front shock absorbers as per the vehicle manufacturer's workshop manual.

VI. Removing the rear shock absorbers

1. Remove the rear OE shock absorbers as per the vehicle manufacturer's workshop manual.

VII. Installation of rear brake line relocators

1. Unbolt the rear brake line brackets next to the leaf spring on the axle.
2. Attach the brake line relocation bracket #4PDB0328 with the OE bolt into the OE location with the second hole facing upwards.
3. Reattach the OE brake line support brackets to the upper hole of the brake line relocation bracket with the supplied M8 bolts to allow the brake lines to clear the leaf spring. See Fig.3

VIII. Removing OE rear spring U-bolts

1. Remove the OE rear spring U-bolts as per the vehicle manufacturer's workshop manual.

IX. Installation of the exchange U-bolt with leaf spring pads

1. Place the rear spring lift pads between the axle and the leaf spring paying attention to correct center bolt orientation and fitment as per the sample pictures attached.
2. Install the replacement U-bolts as per the vehicle manufacturer's workshop manual. See fig. 4.

X. Only for vehicles equipped with headlight height sensor: Preparation of the new rear shock absorbers

1. Measure the the distance from the upper eye to the headlight height sensor on the OE shock absorber. See fig. 5.
2. Carry over the sensor to the new shock absorber and install at same distance from the upper eye. Use the adhesive foam strip #4PDB0138 between sensor and shock absorber body for a tight fit.

XI. Installing the new rear shock absorbers

1. Install the new rear shock absorbers #8023R as per the vehicle manufacturer's workshop manual. The external reservoirs should face forward (towards vehicle's front) for better clearance. See fig. 6.

XII. After installation

1. After the installation the wheels must be duly re-attached and all nuts and bolts re-tightened. Torque specification: please, refer to the vehicle manufacturer's workshop manual.
2. The clearance of hoses, wires and other elements must be ensured at front and rear axle. Pay attention to possible clearance issues with the wheels turned either side and throughout the complete suspension cycle, from full bump to full droop.
3. Put vehicle back on the ground with its normal load and take the following measurements.
4. Measure the length of the rear shock absorber from bolt to bolt. It should not exceed 500mm to guarantee the minimum available downtravel of 40mm. If resulting measurement is higher than 500mm take one of these corrective actions:
 - i. measurement 501-520mm: use 30mm lift block part# AZ45-35-055-01-01
 - ii. measurement 521 or higher: remove lift blocks.
5. Measure the vehicle's height from a straight piece of the body or frame to the ground. See fig.1.
6. Based on the measurements from step 5 readjust the front spring seat as required to obtain near level rake under normal load. A slightly higher rear end is acceptable.
 - i. **Warning:** unload the spring before adjusting the spring seat height. Adjusting the spring seat height under load is not recommended and can lead to premature wear.
 - ii. **Warning:** adjustment is only allowable within the range specified in the TÜV approval.
7. Once adjustment has been finalized tighten the safety worm screw to avoid the spring seat from moving.

8. Make a short testdrive on private grounds to confirm correct function of all elements.
9. Recheck all hardware. Refer to the vehicle manufacturer's workshop manual for torque specifications.
10. Repeat clearance check as described in step 2.
11. Recheck all hardware after a first drive of maximum 50 km. Refer to the vehicle manufacturer's workshop manual for torque specifications.

XIII. Final steps

1. Document all modifications to your vehicle according to the procedures established by local authorities and regulations.
2. The handling of your vehicle will change after the modification of its suspension. Use additional precaution until you get used to its new characteristics.
3. If you have any questions, problems or warranty issues you should contact your dealer first. If they can't resolve the problem, contact 4x4project directly.
4. **Warning:** off road use can put extreme strain on parts and components beyond the design limits of your vehicle. The standard warranty only covers normal driving and does not cover heavy offroad use or racing.

Parts List

A. Parts list for all models:

<u>Quantity</u>	<u>Description</u>	<u>Partnumber</u>
2	Front Spring	4PDCS1018
2	Front Shock Absorber	8023F
2	Rear Shock Absorber	8023R
1	Adhesive foam strip	4PDB0138

B. Parts list if installing rear lift blocks:

<u>Quantity</u>	<u>Description</u>	<u>Partnumber</u>
2	Leaf Spring Pad 30mm or 50mm	30mm part# AZ45-35-055-01-01 50mm part# AZ45-85-061-01-02
4	U-Bolt	M45-85-061-01-02
8	Spring Washer M14	DIN127
8	Nut M14x1.5	DIN6330
2	Brake Line Relocation Bracket	4PDB0328
2	Bolt M8x30	4PDB0082
2	Nylock Nut M8	4PDB0087
4	Washers M8	4PDB0084 DIN125

Appendix



Fig. 1 : example height measurement

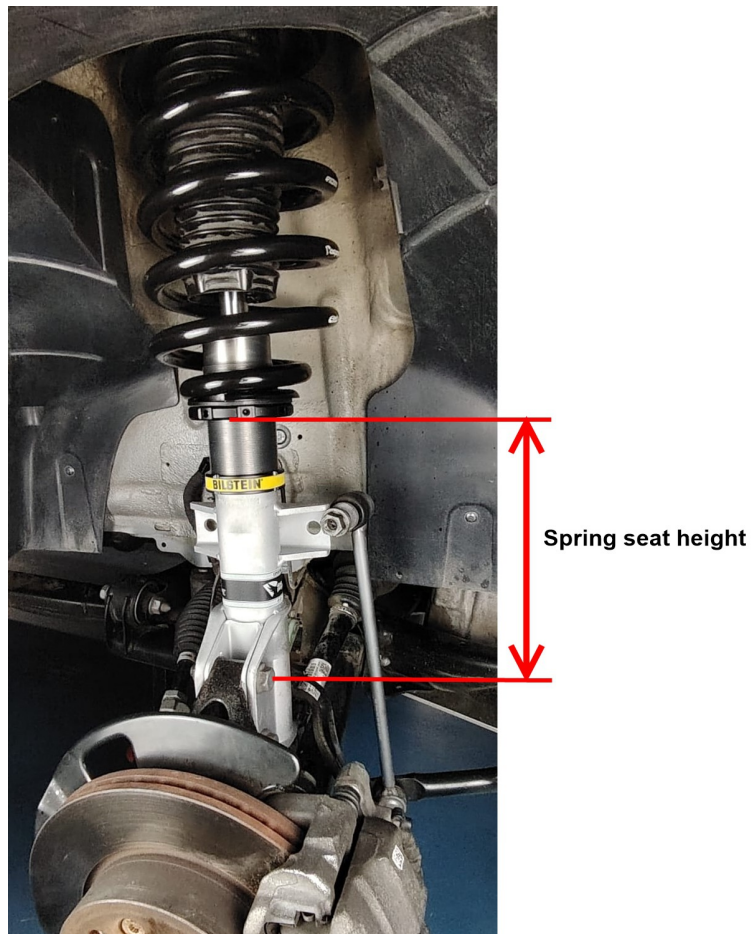


Fig. 2: correct measurement of spring seat height



Fig. 3: correct installation of rear brakeline relocation brackets

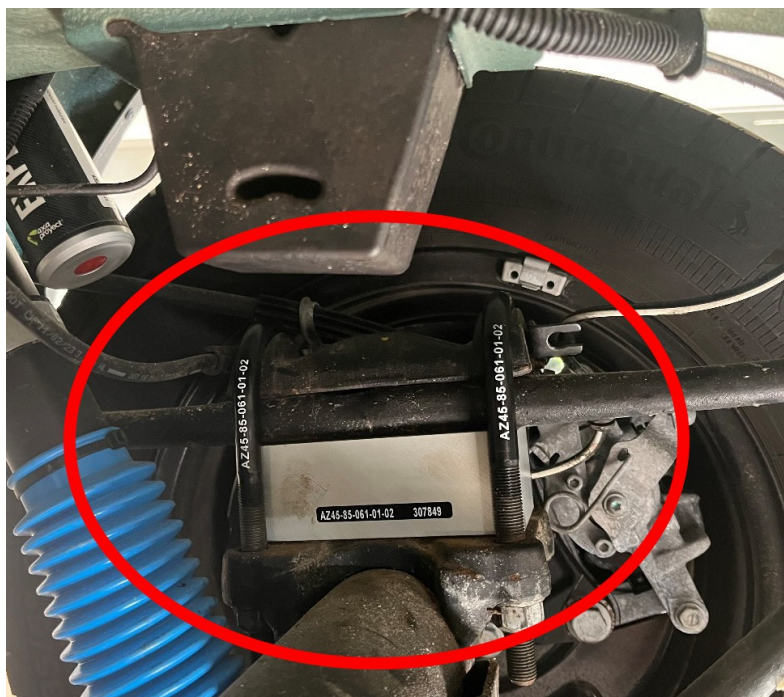


Fig. 4: U-bolts and lift blocks installed

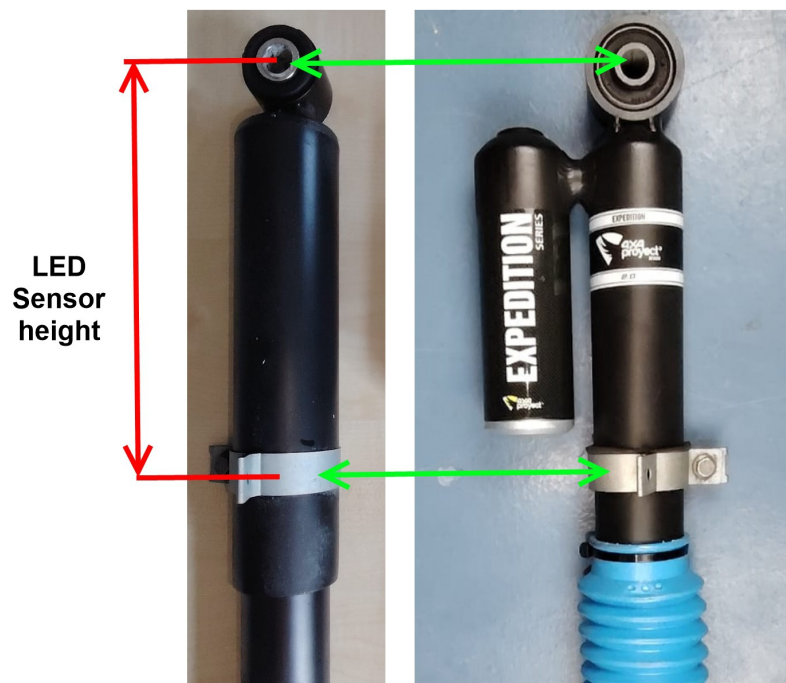


Fig. 5: Location LED height sensor



Fig. 6: shock absorber orientation

For technical assistance, installation guidance and questions contact your dealer, installer or 4x4project at:

www.4x4project.com

Calle Pineta 16

50410 Cuarte de Huerva, Zaragoza

Spain

Mail: info@4x4project.com

Revision: V1.3

Revision date: 30.08.2024