



Installation Instructions

Rock Crawler Rear Bumper W/Tire Carrier
1987-2006 Jeep Wrangler
Part # 76621-01 (Bumper)

NOTE: Carefully read entire instructions thoroughly before attempting to assemble and/or install this product.

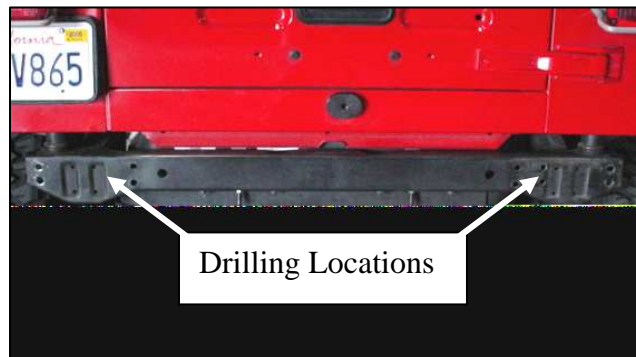
Parts Included	Qty
Rear Bumper	1
12 mm Nut	8
12 mm Flat Washer	14
12 x 30mm Hex Head Bolt	8

This bumper is rated with a Class IV receiver. (9,000lbs GVWR)

Note: Check with OEM towing specifications and operation before towing anything with your vehicle.

Section One

1. Remove factory rear bumper or bumperettes.
2. On all models the inner two holes will not line up with the factory holes and will need to be drilled.
3. Mount bumper on your vehicle and fasten with included bolts using only the outside holes. Make sure bumper is positioned correctly and tighten bolts snug. Use the inner bracket holes as a template; mark the holes on the frame. Now remove bumper and set to the side.
4. **Caution: Use Extreme care and caution before drilling. Make sure to check backside of frame for hazards and obstructions.** Using a 7/16" bit, drill the marked holes. (Figure 1)



(Figure 1)

Section Two

5. Position bumper against rear vehicle frame. Attach driver and passenger side rear brackets using (1) 12 x 30mm bolt, (2) 12mm flat washers, (1) 12mm lock washer, (1) 12mm nut, at each of the eight mounting holes. **Note:** Do not tighten completely at this time.
6. Using (1) 12 x 30mm bolt, (1) 12 mm flat washer, (1) 12mm lock washer for each hole, mount the bottom brackets of the bumper to the bottom hole in the vehicle frame.(Tighten all hardware now)
- 7.

For Technical Support/Warranty Information please call 310-762-9944

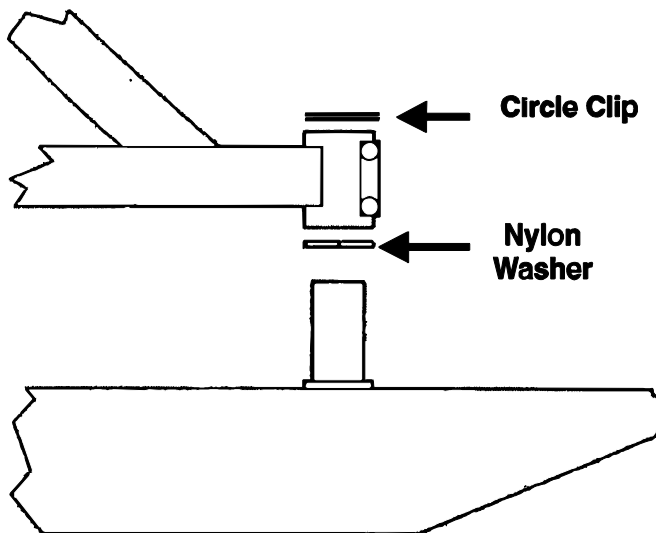


Installation Instructions

Rock Crawler Rear Bumper W/Tire Carrier
1987-2006 Jeep Wrangler
Part # 76621-01 (Bumper)

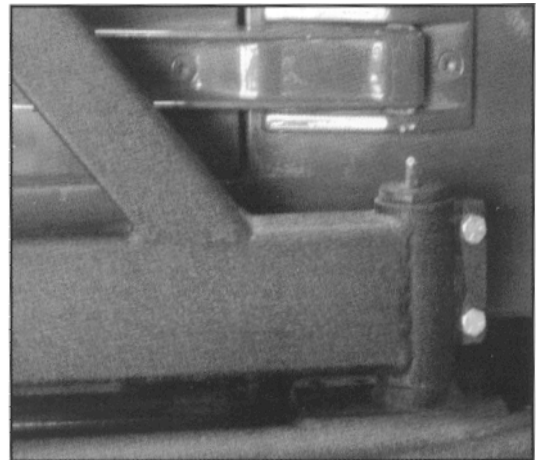
Section Three

8. Place nylon washer over rear bumper post, then place tire carrier on top. Once the tire carrier has been placed over post, swing it to the closed position and latch it into place. Secure it with the already installed bolts. (Figure 2 and 3)
9. Carefully place the Circle Clip on top of the post over the tire carrier portion.



(Figure 2)

(Figure 3)



10. Locate the tire carrier top post, along with (1) 7/8" x 2 1/2" Hex Head Bolt, (2) 7/8" Flat Washer, and (1) 7/8" Lock Nut. Insert the top post into the top of the tire carrier and secure with the 7/8" hardware. (Figure 4).

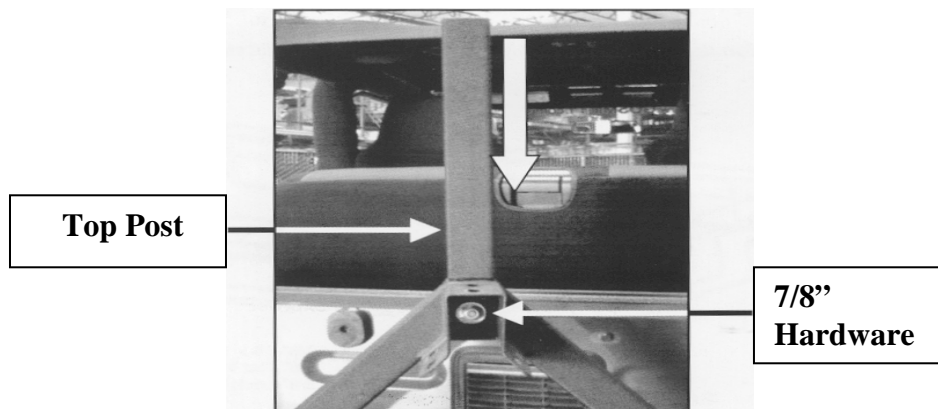
For Technical Support/Warranty Information please call 310-762-9944

Smittybilt, 400 West Artesia Blvd, Compton, CA 90220



Installation Instructions

Rock Crawler Rear Bumper W/Tire Carrier
1987-2006 Jeep Wrangler
Part # 76621-01 (Bumper)



(Figure 4)

Section Four

11. Locate tire mounting bracket, (3) 3/8 x 1" Hex Head Bolts, (6) 3/8" Flat Washers, (3) Lock Nuts. Slide the tire mounting bracket over support bracket on carrier. Lineup the 3 slotted holes and install with the 3/8" hardware. (Figure 5,6) **Note:** There are two sets of slotted holes. This is to accommodate oversize tires. Determine the best position for your tire size and then tighten all hardware on mounting bracket. For best results the back side of the tire should rest against the (Triangle) tire carrier.

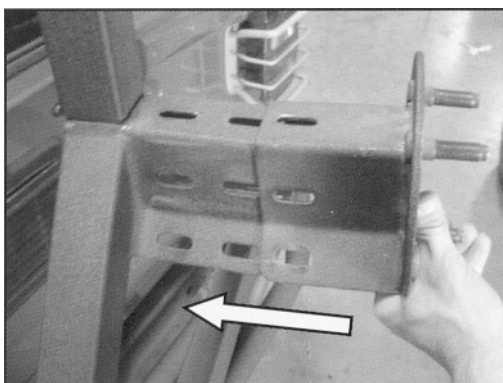


Fig 5

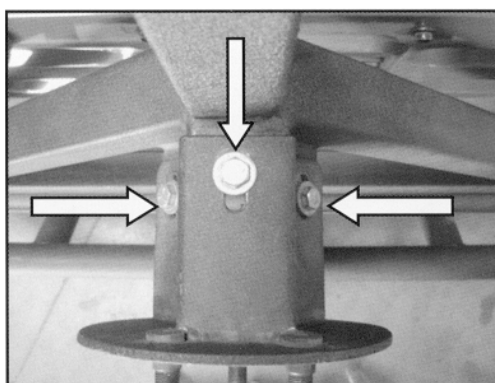


Fig 6

For Technical Support/Warranty Information please call 310-762-9944

Smittybilt, 400 West Artesia Blvd, Compton, CA 90220